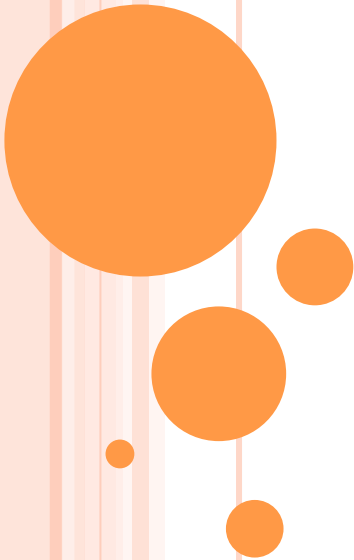




# LEARNING THROUGH PLAY

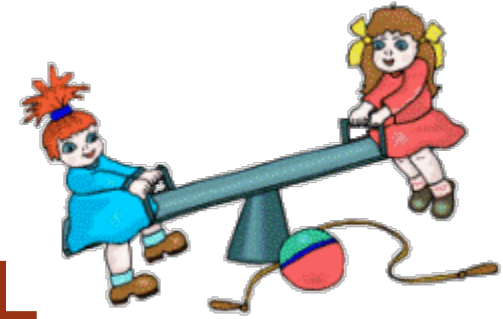
By Design in Pre K



I CAN SCHOOL 

RIVERSIDE

# PLAY - NATURAL



Play is a **natural** way of learning and children use all their senses to **explore** the world.



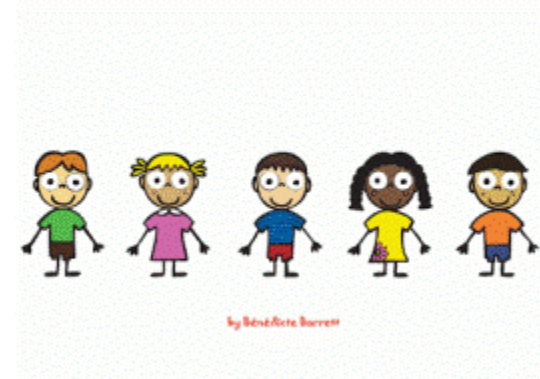
# WHAT RESEARCH SAYS....



- Our thinking about play has been influenced over the years by the work of many educationalists, the recent ones being Piaget, Moyles and Vygotsky.
- Their theories of play might have different approaches but they all advocate the importance of play in learning.
- They have categorised **PLAY** according to...
  - Developmental stages
  - Purpose (exploration, imagination, skill development)
  - Area of learning involved (mathematical play, play with language, narrative play)
  - Equipment, materials or contexts used (sand play, computer play, outdoor play)
- Individual or social nature of the play and so on....

# STAGES OF PLAY

- Onlookers
- Solitary Play
- Parallel play
- Collaborative Play



# THE ONLOOKER



# SOLITARY PLAY

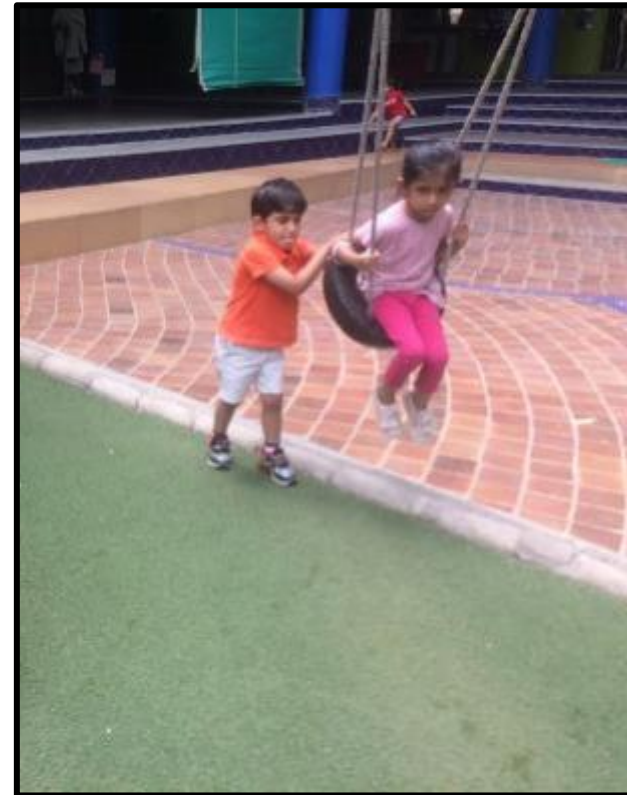




# PARALLEL PLAY



# COLLABORATIVE PLAY







# NOT BY CHANCE, BUT BY DESIGN

The different kinds of play in Pre-K...

# CORNER EXPLORATION

- Sensorial corner
- Material corner
- Logical corner
- Literacy corner
- Pretence play corner
- Cozy corner
- Jungle gym
- Sandpit



# SENSORIAL CORNER





# MATERIAL CORNER





# LOGICAL CORNER



# LITERACY CORNER





# PRETENCE PLAY CORNER



# COZY CORNER





# JUNGLE GYM



# SANDPIT

